

MASTERSHIRT:

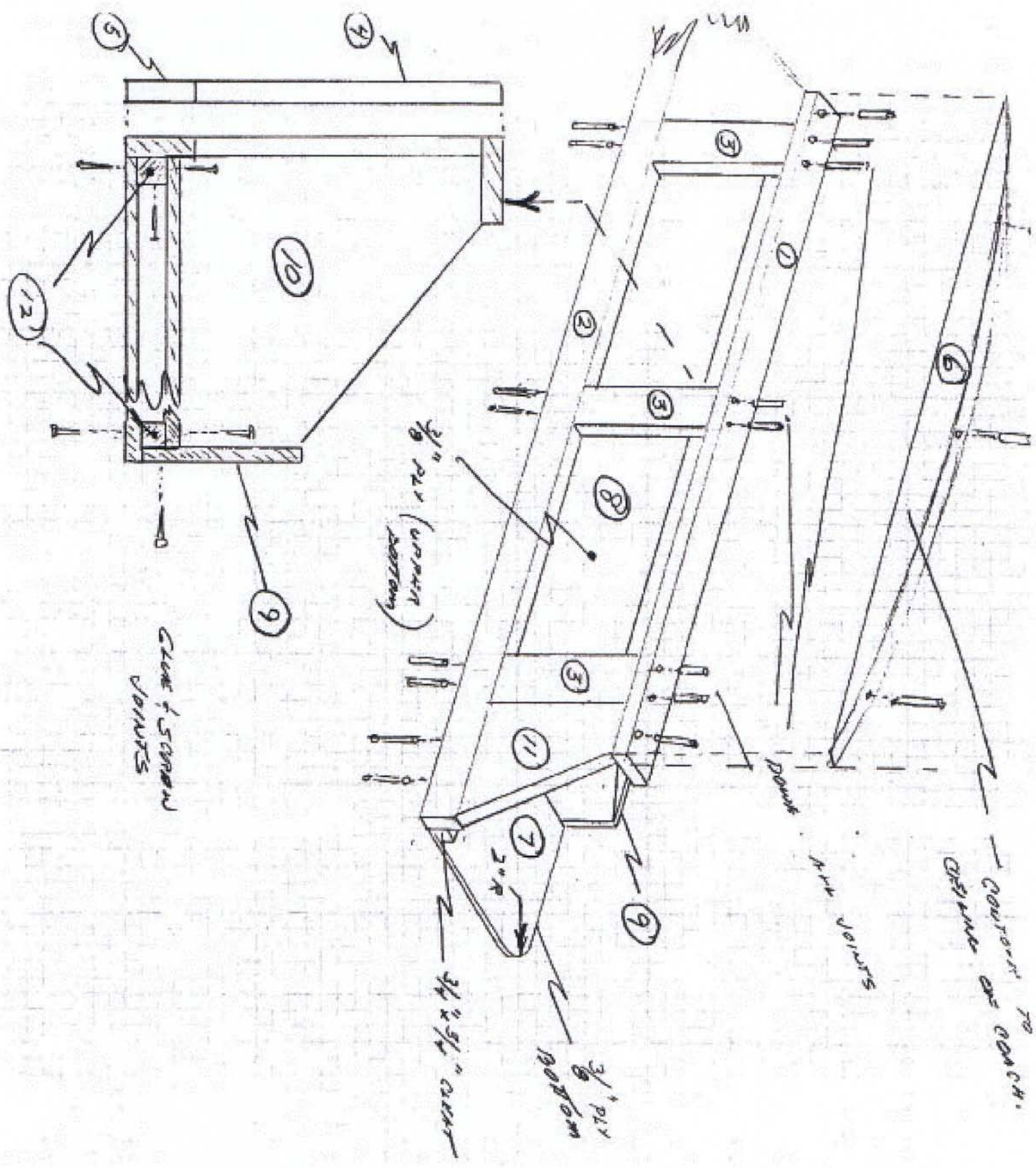
DIMENSION - 81MM, MINOR OR MAX  
 PLY - 5/8", MAJOR OR MAX  
 (ONE SIDE ONLY)

DOORS: OPTIONS: 1 OR 2 DOORS

- 1 DOOR 9" X 47 1/2"
- 2 DOORS 9" X 23 3/4"

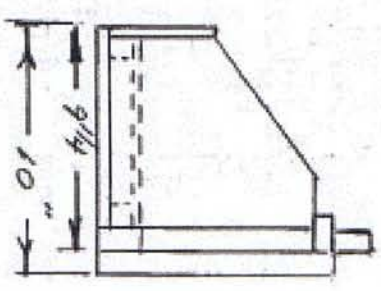
REAR OVERHEAD CABINET

RAY ALDEN 2/91



MATERIAL LIST

- ① 1 PC.  $3/4"$  x  $1 1/2"$  x  $60"$
- ② 1 PC.  $3/4"$  x  $1 1/2"$  x  $73"$
- ③ 3 PCS.  $3/4"$  x  $2 5/8"$  x  $7 3/8"$
- ④ 2 PCS.  $3/4"$  x  $1 1/2"$  x  $9 5/8"$
- ⑤ 2 PCS.  $3/4"$  x  $1 1/2"$  x  $10 9/16"$
- ⑥ 1 PC.  $3/4"$  x  $1 1/2"$  x  $60"$
- ⑦ 1 PC.  $3/8"$  x  $8 1/2"$  x  $73"$  PLYWOOD
- ⑧ 1 PC.  $3/8"$  x  $8 1/8"$  x  $58 1/2"$  PLYWOOD
- ⑨ 1 PC.  $3/8"$  x  $4"$  x  $60"$  PLYWOOD
- ⑩ 2 PCS.  $3/4"$  x  $8 1/8"$  x  $8 1/2"$  PLYWOOD
- ⑪ 2 PCS.  $3/4"$  x  $7 3/8"$  x  $10 9/16"$  PLYWOOD
- ⑫  $3/4"$  x  $3/4"$  CLEATS TO SUIT



TO ATTACH TO STANDARD GND REAR CABINETS - USE 3 -  $1/4"$  BOLTS THROUGH AND DR WITH ANCHORS & THROUGH PANEL ⑪

NOTE: DOOR OR DOORS ARE MATED WITH STANDARD GND CABINET UNITS